



ELECTRONIC COPY

LG670433618
Report verification at igi.org



December 19, 2024

IGI Report Number **LG670433618**

Description **LABORATORY GROWN DIAMOND**

Shape and Cutting Style **SQUARE CUSHION BRILLIANT**

Measurements **6.95 X 6.76 X 4.38 MM**

GRADING RESULTS

Carat Weight **1.53 CARAT**

Color Grade **E**

Clarity Grade **VVS 2**

Cut Grade **EXCELLENT**

December 19, 2024

IGI Report Number **LG670433618**

Description **LABORATORY GROWN DIAMOND**

Shape and Cutting Style **SQUARE CUSHION BRILLIANT**

Measurements **6.95 X 6.76 X 4.38 MM**

GRADING RESULTS

Carat Weight **1.53 CARAT**

Color Grade **E**

Clarity Grade **VVS 2**

Cut Grade **EXCELLENT**

ADDITIONAL GRADING INFORMATION

Polish **EXCELLENT**

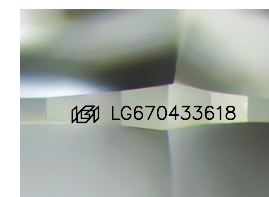
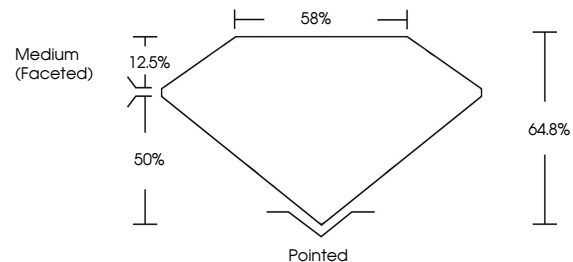
Symmetry **EXCELLENT**

Fluorescence **NONE**

Inscription(s) **IGI LG670433618**

Comments: This Laboratory Grown Diamond was created by Chemical Vapor Deposition (CVD) growth process. Type IIa

PROPORTIONS



Sample Image Used

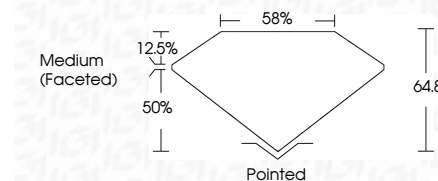
COLOR

D E F G H I J Faint Very Light Light

CLARITY

IF VS¹⁻² VS¹⁻² SI¹⁻² I¹⁻³

Internally Flawless Very Very Slightly Included Very Slightly Included Slightly Included Included



ADDITIONAL GRADING INFORMATION

Polish **EXCELLENT**

Symmetry **EXCELLENT**

Fluorescence **NONE**

Inscription(s) **IGI LG670433618**

Comments: This Laboratory Grown Diamond was created by Chemical Vapor Deposition (CVD) growth process. Type IIa



IGI



December 19, 2024	IGI Report No LG670433618	1.53 CARAT	E	Pointed
SQUARE CUSHION BRILLIANT	6.95 X 6.76 X 4.38 MM	VVS 2	EXCELLENT	EXCELLENT
Carat Weight	Color Grade	Clarity Grade	Depth	Table
1.53 CARAT	E	VVS 2	64.8%	58%
Color Grade	Clarity Grade	Cut Grade	Medium (Faceted)	
E	VVS 2	EXCELLENT	Medium (Faceted)	
Clarity Grade	Depth	Table	Girdle	
VVS 2	64.8%	58%	Medium (Faceted)	
Cut Grade	Medium (Faceted)			
EXCELLENT	Medium (Faceted)			
Polish	Symmetry	Fluorescence	Inscription(s)	
EXCELLENT	EXCELLENT	NONE	IGI LG670433618	
Symmetry	Fluorescence	Inscription(s)		
EXCELLENT	NONE	IGI LG670433618		
Comments: This Laboratory Grown Diamond was created by Chemical Vapor Deposition (CVD) growth process. Type IIa				